



CEILING RADIATION DAMPER FOR WOOD TRUSS CEILING ASSEMBLIES REGISTER BOX • SIDE INLET MODEL: 243FRD



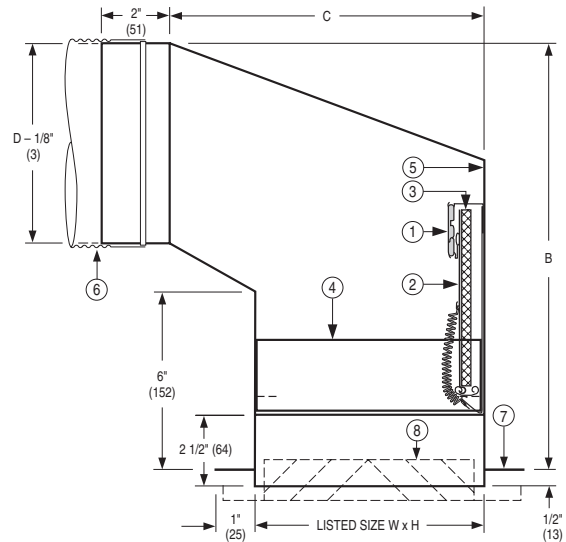
QUALIFICATIONS:

- **UL 263 CLASSIFIED CEILING RADIATION DAMPER. Category CABS. (File # 9660)**
1 hour rated for use in **UL floor/ceiling design numbers L550/L574/L579** and **roof/ceiling design numbers P531/P545** (Similar in construction to designs L521/L546 and P522).
- **Meets NFPA 90A requirements**

DESCRIPTION:

Ceiling dampers are designed to function as a heat barrier in air handling openings penetrating fire resistive membrane ceilings. The model 243FRD has been especially designed and tested to provide protection and simple installation in specific UL design wood truss ceiling assemblies.

The 243FRD assembly consists of a rectangular ceiling damper recessed in a sheet metal tapered register box (boot) with a round inlet collar, that accommodates a steel grille or register.



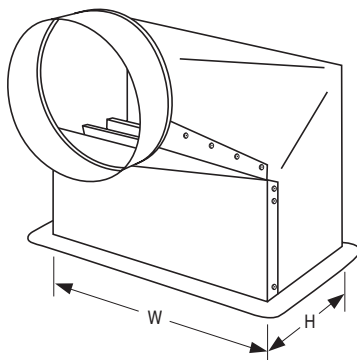
CONSTRUCTION:

1. UL listed fusible link, 212°F (100°C) standard.
2. Blade: 22 ga. (0.85) G60 roll-formed galvanized steel.
3. Blade Insulation: Non-asbestos UL Classified.
4. Damper frame: 22 ga. (0.85) G60 galvanized steel.
5. Steel plenum: 26 ga. (0.55) min. with round connection collar.
6. UL Classified Class 0 or I Flexible Air Duct connection by others.
7. Plaster flange.
8. Steel grille / register (by others). Standard depth for grille clearance is 2 1/2" (64).

OPTION:

Installation Support Angles. 26" (660) long.

- 2 @ 3/4" x 3/4" x 16 ga. (19 x 19 x 1.6) or
- 2 @ 1 1/2" x 1 1/2" x 22 ga. (38 x 38 x 0.85)



NOTE:

Building code and UL Classification require damper installation in accordance with manufacturer's instructions. See Doc. RMP-CRDWTINST.

Dimensional Data:

Available Sizes		B	C
W x H	Nom. Duct Size D		
8 x 4 (203 x 102)	4" (102) dia.	11 1/2 (292)	8 (203)
	5" (127) dia.	11 (279)	8 (203)
10 x 4 (254 x 102)	4" (102) dia.	8 (203)	8 (203)
	5" (127) dia.	11 1/2 (292)	7 3/4 (197)
	6" (152) dia.	7 1/4 (184)	7 3/4 (197)
12 x 4 (305 x 102)	6" (152) dia.	12 1/2 (318)	7 3/4 (197)
	7" (178) dia.	12 (305)	7 1/2 (191)
	8" (203) dia.	13 1/2 (343)	7 (178)
14 x 4 (356 x 102)	7" (178) dia.	13 (330)	7 1/2 (191)
	4" (102) dia.	11 (279)	8 (203)
6 x 6 (152 x 152)	5" (127) dia.	11 (279)	8 (203)
	6" (152) dia.	12 (305)	10 (254)
8 x 6 (203 x 152)	5" (127) dia.	11 1/2 (292)	9 (229)
	6" (152) dia.	12 (305)	10 (254)
	7" (178) dia.	13 (330)	9 1/4 (235)
10 x 6 (254 x 152)	6" (152) dia.	13 (330)	9 (229)
	7" (178) dia.	13 1/2 (343)	9 1/4 (235)
	8" (203) dia.	14 (356)	10 1/4 (260)
	9" (229) dia.	14 1/2 (368)	11 (279)
12 x 6 (305 x 152)	6" (152) dia.	13 (330)	9 (229)
	7" (178) dia.	13 1/2 (343)	9 1/4 (235)
	8" (203) dia.	14 (356)	10 1/4 (260)
	9" (229) dia.	14 1/2 (368)	11 (279)
	10" (254) dia.	14 1/2 (368)	10 1/4 (260)
14 x 6 (356 x 152)	6" (152) dia.	12 1/2 (318)	10 (254)
	7" (178) dia.	13 1/2 (343)	9 1/4 (235)
	8" (203) dia.	14 1/2 (368)	9 3/4 (248)
	9" (229) dia.	14 1/2 (368)	10 (254)
8 x 8 (203 x 203)	10" (254) dia.	14 1/2 (368)	10 1/4 (260)
	5" (127) dia.	12 (305)	10 (254)
	6" (152) dia.	12 (305)	10 (254)
10 x 8 (254 x 203)	7" (178) dia.	13 1/2 (343)	9 3/4 (248)
	8" (203) dia.	14 (356)	10 1/4 (260)
	8" (203) dia.	14 (356)	10 1/4 (260)
12 x 8 (305 x 203)	7" (178) dia.	13 1/2 (343)	9 3/4 (248)
	8" (203) dia.	14 (356)	10 1/4 (260)
14 x 8 (356 x 203)	6" (152) dia.	13 (330)	12 (305)
	7" (178) dia.	14 (356)	12 (305)
	8" (203) dia.	15 (381)	12 (305)
	9" (229) dia.	16 (406)	13 (330)
	10" (254) dia.	17 (432)	13 (330)

W x H = Nominal Grille / Register Size

Dimensions are in inches (mm).

Date: 9-20-06 Dwg. 243FRD